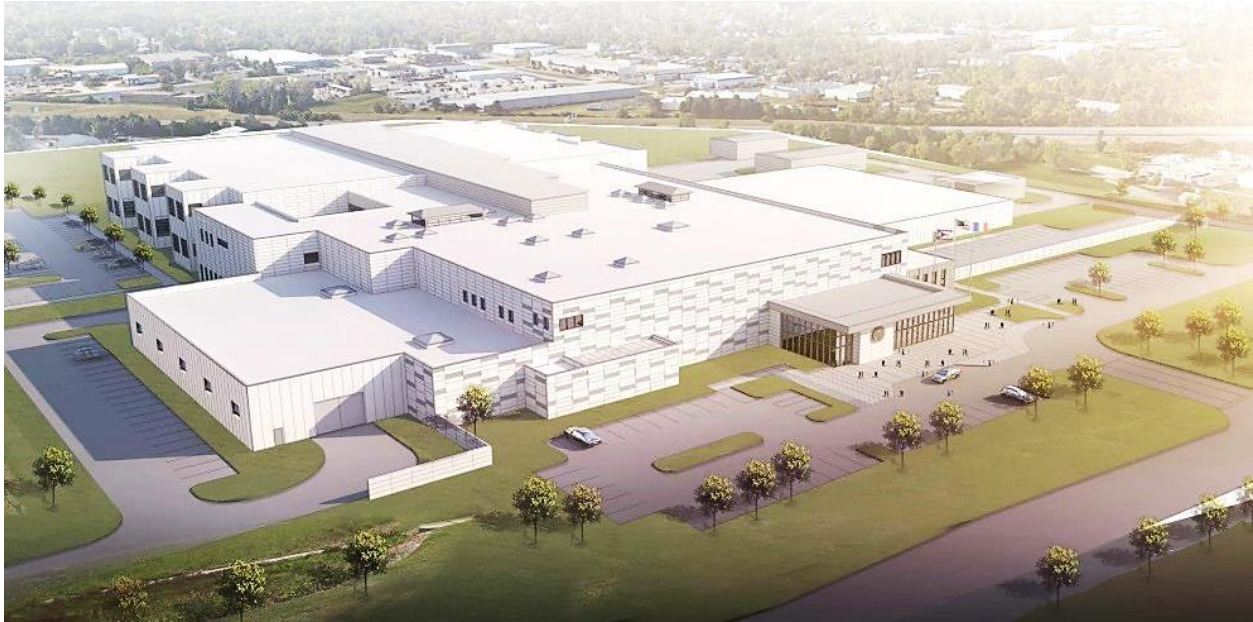


FRANKLIN COUNTY CORRECTIONS CENTER

Fact Sheet



- Site: 2551 Fisher Road. 24 acres.
- Phase 1 Cost- \$175 million; Size- 429,500 square feet; 870 beds.
- Direct supervision environment leading to better behavior outcomes and reduced recidivism
- 16 housing units – ranging from 34 to 68 beds per unit
 - Program and services meeting rooms inside the housing units
 - Specialized housing units include:
 - Orientation
 - Mental health
 - Behavioral
 - Medical
 - Maximum security
- Targeted for LEED-Silver Rating
- All support spaces sized to support up to 2,800 beds
- Other building features include:
 - Kitchen/food service
 - Laundry
 - Medical clinic
 - Vehicle sally port for secure detainee transports
 - Visitation/public spaces
 - Warehouse
 - Staff wellness and support spaces
- Partial completion December 2019; full completion spring 2020